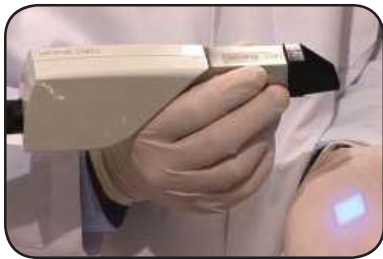


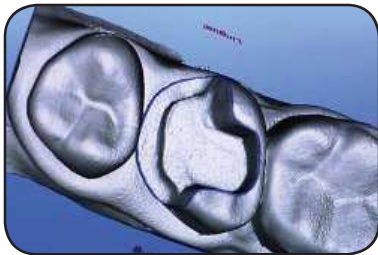
# CAD/CAM

## CAD/CAM restorations in a single appointment

Powerful computer-aided design and manufacturing technology, called CAD/CAM, allows us to custom fabricate tooth-colored restorations, crowns, onlays, and veneers right here in our office, and all in a single appointment.



*CAD/CAM camera*



*CAD/CAM computer model*



*CAD/CAM restoration image*



*CAD/CAM milling machine*

## The procedure

As the first step in the CAD/CAM technique, we prepare and shape the tooth for the restoration. The second step involves applying a reflective powder onto the prepared tooth. We then take a digital image using a special optical infrared camera that records the tooth's exact dimensions directly into the CAD/CAM computer.

After we carefully design the restoration, we select an appropriate material of the proper shade for your specific tooth. We place this material into the milling machine, which, in just a few minutes, shapes it into a custom-fitted restoration.

We then try in the new restoration, add any necessary coloring, bond or cement it in place, and polish it to a beautiful luster. Last, we'll check your bite and make any final adjustments.

## The advantages

Using CAD/CAM technology is healthier for you because it provides extremely accurate restorations, made with durable materials that work with advanced dental adhesives.

This means that only a minimal amount of tooth preparation is required, leaving more of the healthy tooth structure intact. And because your new restorations are made out of tooth colored materials, they are naturally beautiful. With CAD/CAM technology, you can have a strong and beautiful restoration in just one appointment.